

# What Plan is Right for Me?

View in the help center:

<https://bitwarden.com/help/what-plan-is-right-for-me/>

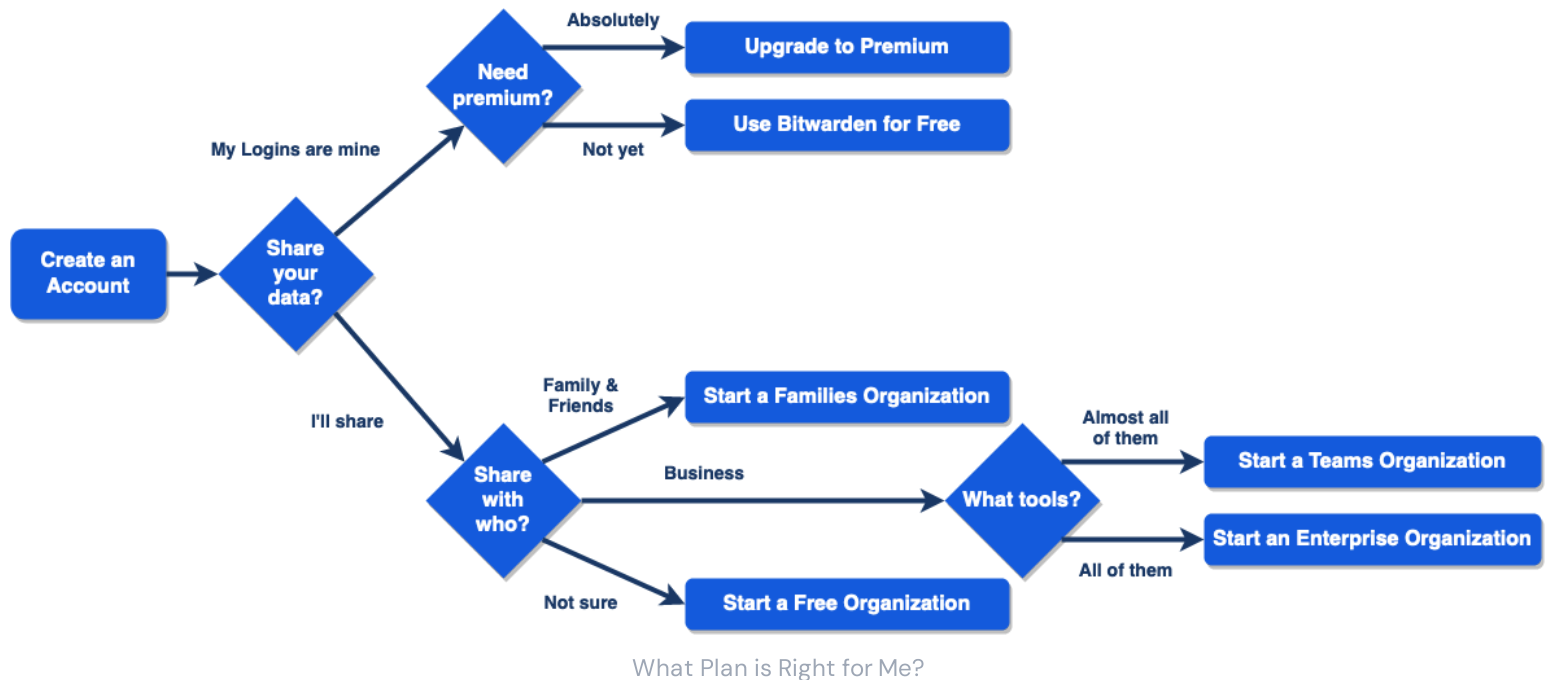
## What Plan is Right for Me?

Hi there! Bitwarden is here to help you take your first steps, whether you're a convert from another solution or new to password managers all-together.

This article will guide you through a few questions that can help you determine which Bitwarden plan is right for you. Questions like:

- Do you need to share your data?
- Do you need premium features?
- Who will you share with?
- What tools will you need?

Use this flowchart to guide you through your journey:



## Do you want to start protecting your online accounts with Bitwarden?

We certainly hope so! No matter what plan you decide is best for you, the steps to [Create an Account](#) are all the same.

Go ahead, [Create an Account](#)! Once your account is created, consider the following questions:

## Do you need to share your data?

Will you be a Bitwarden Solo-Practitioner, or will you securely share data between friends, family, team of co-workers, or an entire company?

If your answer is "My Logins are mine"...

...we recommend one of our individual plans.

**Continue to:** [Do you need Premium features?](#)

If your answer is "I have some shared resources"...

...we recommend that you create an Organization.

**Continue to:** [Who will you share with?](#)

## Do you need Premium Features?

As a Bitwarden Solo-Practitioner, will you be a Bitwarden Black Belt using Premium features like:

- Advanced 2FA options such as Yubikey and Duo
- 1 GB of encrypted file attachments
- Bitwarden Authenticator (TOTP)
- Emergency Access
- Vault Health Reports

If your answer is "Absolutely"...

...we recommend a Premium Individual plan.

**[Upgrade now!](#)**

If your answer is "Not yet"...

...we recommend staying on the free individual plan.

**[Download the Apps!](#)**

## Whom will you share with?

Bitwarden is a great way to securely share data like Logins, Notes, Cards, and Identities. Will your Organization be used to share data with:

- Family & Friends (Up to 6 users)
- Business (Unlimited users, billed per seat)
- Not sure

**If your answer is "Family & Friends"...**

...we recommend a Families Organization for:

- Premium features for up to 6 users
- Unlimited sharing between up to 6 users

**Create your Families Organization.**

**If your answer is "Business"...**

...we have one last question.

**Continue to:** [What tools will you need?](#)

**If your answer is "Not sure..."**

...we recommend trying a Free Organization for:

- Core Bitwarden features for 2 users
- Limited sharing between 2 users

**Create your Free Organization.**

## What tools will you need?

Bitwarden has two plans built for for Businesses; Teams and Enterprise. Both Teams Organizations and Enterprise Organizations allow an unlimited number of users (billed Per User Per Month) and include:

- Premium features for enrolled users
- Event Logs
- User Groups
- API for Organization Management
- Directory Connector

However, only Enterprise Organizations include:

- Login with SSO
- Enterprise Policies
- Self-host option

**If your answer is "Almost all of them"...**

...we recommend a Teams Organization.

**Create your Teams Organization.**

**If your answer is "I need all of them"...**

...we recommend an Enterprise Organization.

**Create your Enterprise Organization.**

## Still not sure?

If you're still not sure which plan is right for you, you can find comparisons of each plan at [About Bitwarden Plans](#). Or, [Contact Us](#) at any time for further help.