

PASSWORD MANAGER > AUTOFYLL >

# Autofill Custom Fields

View in the help center:

<https://bitwarden.com/help/auto-fill-custom-fields/>

## Autofill Custom Fields

Bitwarden can do more than just [autofill your usernames and passwords](#)! Bitwarden browser extensions can autofill [custom fields](#) to simplify filling in security questions, PINS, and more.

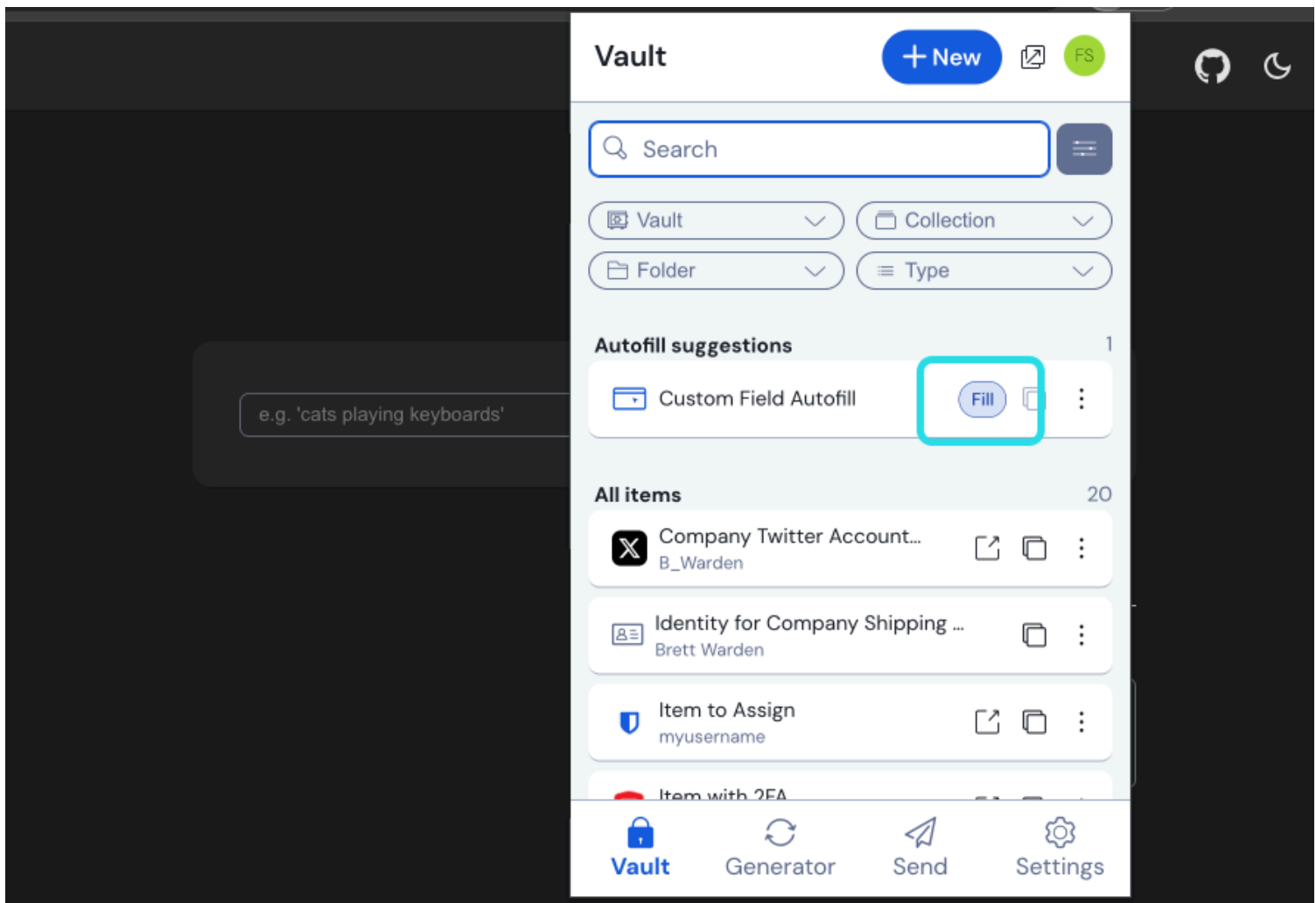
Additionally, if your browser extension is having issues autofilling usernames and passwords for a particular site, using [linked custom fields](#) can force an autofill.

### 💡 Tip

It's important to name the custom field correctly in order for autofill to work. [Learn more.](#)

To autofill custom fields:

1. Open the browser extension to the **Vault** view. This view automatically detects the website (for example, [myverizon.com](#)) of the page displayed in the open tab and surfaces any logins with corresponding URIs.
2. Select the **Fill** button on item that contains the custom field you want to autofill:



Item with a custom field

The browser extension will find any fields that match the [custom field name](#) and autofill that field's value.

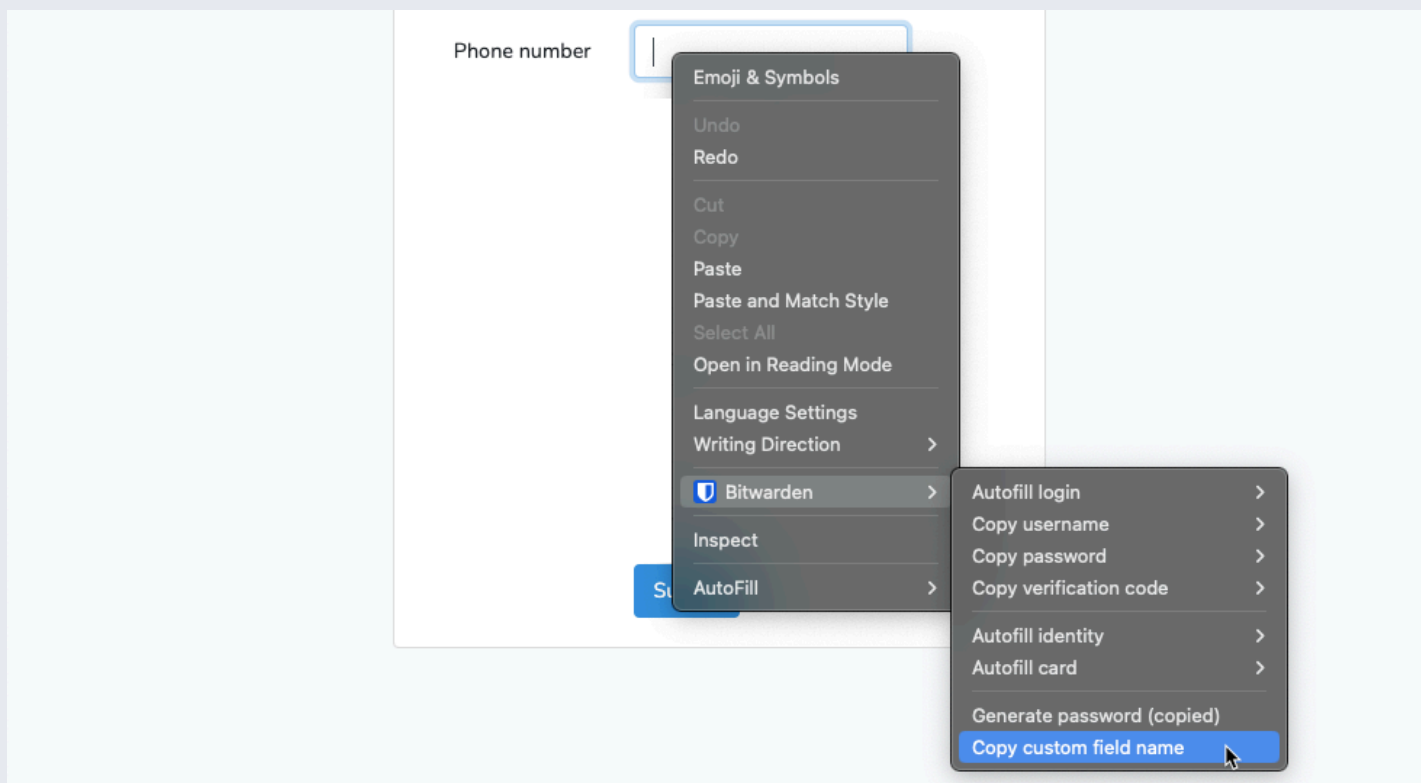
## Using linked custom fields

Linked custom fields can be used to solve issues where your browser extension can't autofill usernames and passwords for a particular site. To create and autofill a linked custom field:

1. In the **Custom fields** section of an item's **Edit** panel, choose **Linked** from the Field type dropdown.
2. In the **Name** input, [give the custom field a name](#) that corresponds to the username or password's HTML form element **id**, **name**, **aria-label**, or **placeholder**.

### Tip

You can get the right value by right-clicking the form element and using the **Copy Custom Field Name** context menu option:



3. Select **Add**.
4. Select **Username** or **Password** for the field's value depending on which credential you are having trouble autofilling. In many cases, you'll need to create a linked custom field for each.
5. **Save** the changes to the vault item.

Now that you have created one or more linked custom fields, you can autofill using the [method described in an earlier section](#). When you do, your browser extension will autofill the username, password, or both into the HTML form element given for a field Name.

## Special autofill scenarios

### HTML

Typically custom fields are autofilled in HTML `<form>` or `<input>` elements, however Bitwarden browser extensions can autofill custom field values into the `innerText` of HTML `<span>` elements as well.

In order to autofill into a `<span>` element, the opening tag must have the `data-bwautofill` attribute. So, in the following scenario:

*Bash*

```
<span data-bwautofill id="myspan">Bitwarden is great.</span>
```

A custom field with **name:** `myspan` will replace `Bitwarden is great` with whatever is saved in the custom field's **value**.