

管理者コンソール > レポート

# Microsoft Sentinel SIEM

ヘルプセンターで表示:

<https://bitwarden.com/help/microsoft-sentinel-siem/>

## Microsoft Sentinel SIEM

Microsoft Sentinel is a security information and event management (SIEM) platform that can be used to monitor Bitwarden organizations. Organizations can monitor [event](#) activity with the Bitwarden Event Logs app on Microsoft Sentinel.

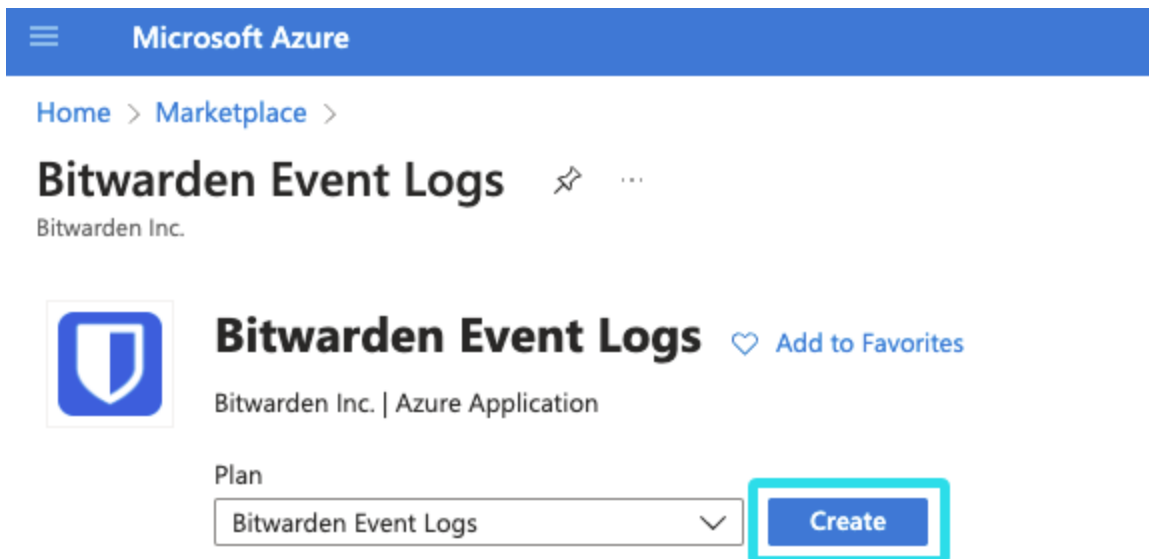
### Setup

To setup the Bitwarden integration, an active Azure account with access to a Microsoft Sentinel Workspace is required. Additionally, a Bitwarden [API key](#), which can only be retrieved by [organization owners](#).

## Install the Bitwarden app to your Microsoft Sentinel dashboard

The Bitwarden Event Logs application can be located in the [Microsoft Azure Marketplace](#). To add the new application to your Workspace:

1. Choose the Bitwarden Event Logs plan from the dropdown menu and select **Create**.



*Bitwarden Event Logs marketplace app*

2. Complete the required fields and select the Workspace that will be monitoring Bitwarden organization data.
3. Once complete, select **Review + create**.

## Connect your Bitwarden Organization

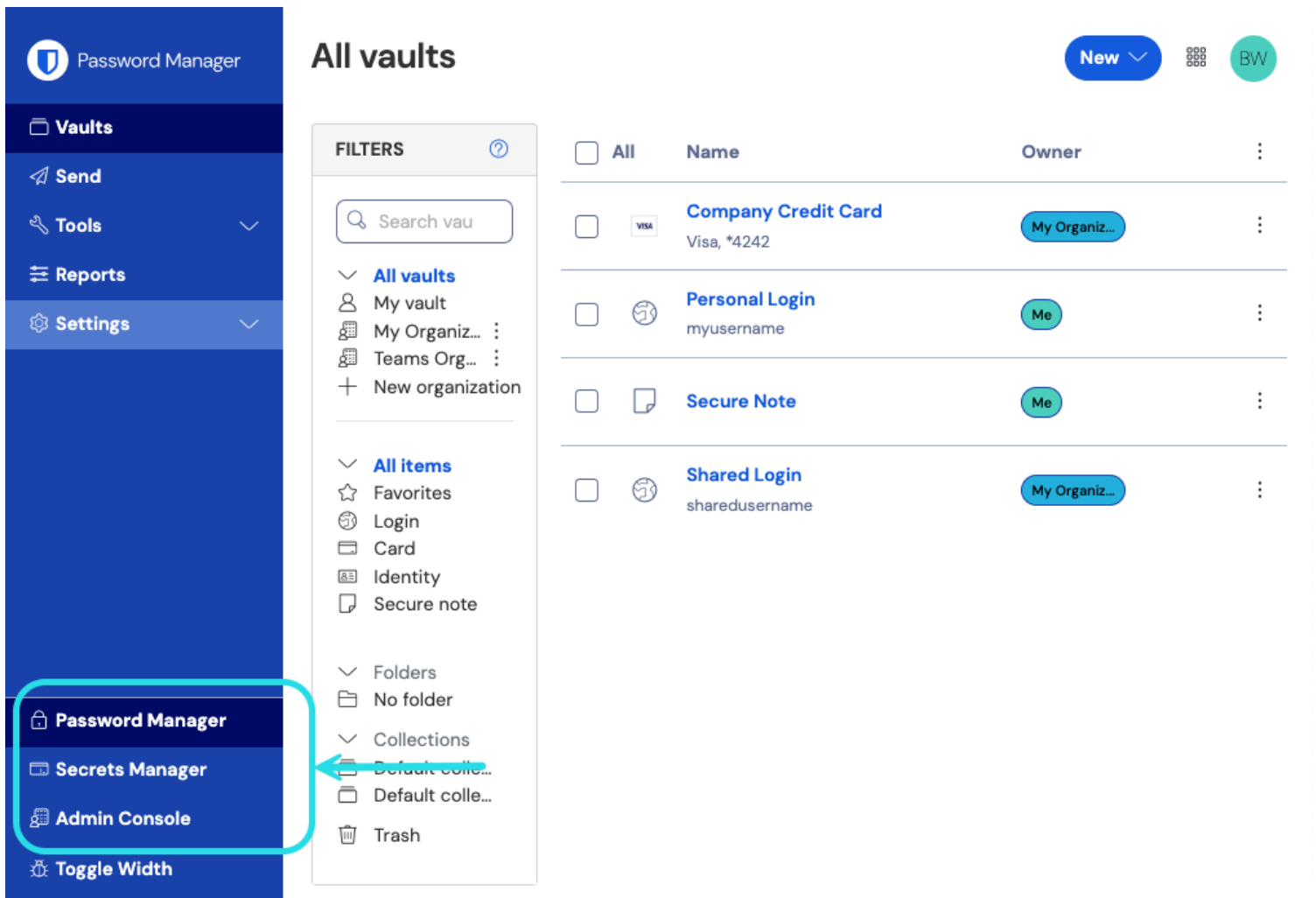
Once the Bitwarden Event Logs app has been added to your Microsoft Sentinel Workspace, you can connect your Bitwarden organization using your Bitwarden [API key](#).

1. Return to the **Data connectors** screen and select the Bitwarden Event Logs app. Select **Open connector page**. If the Bitwarden Event Logs app is not visible, you may be required to select  **Refresh**.

The screenshot shows the Microsoft Sentinel 'Data connectors' page. On the left is a navigation menu with categories like General, Threat management, Content management, and Configuration. The main area displays '1 Connectors' and '0 Connected'. A search bar and filters for 'Providers: Bitwarden Inc' and 'Data Types: All' are visible. A table lists the 'Bitwarden Event Logs' connector. A right-hand pane provides details for this connector, including a description, last data received status, content source (Bitwarden), version (1.0.0), author (Bitwarden), and supported by (Bitwarden Inc | Email). A 'Go to log analytics' link and a 'Data received' chart are also present. A blue box highlights the 'Open connector page' button at the bottom of the details pane.

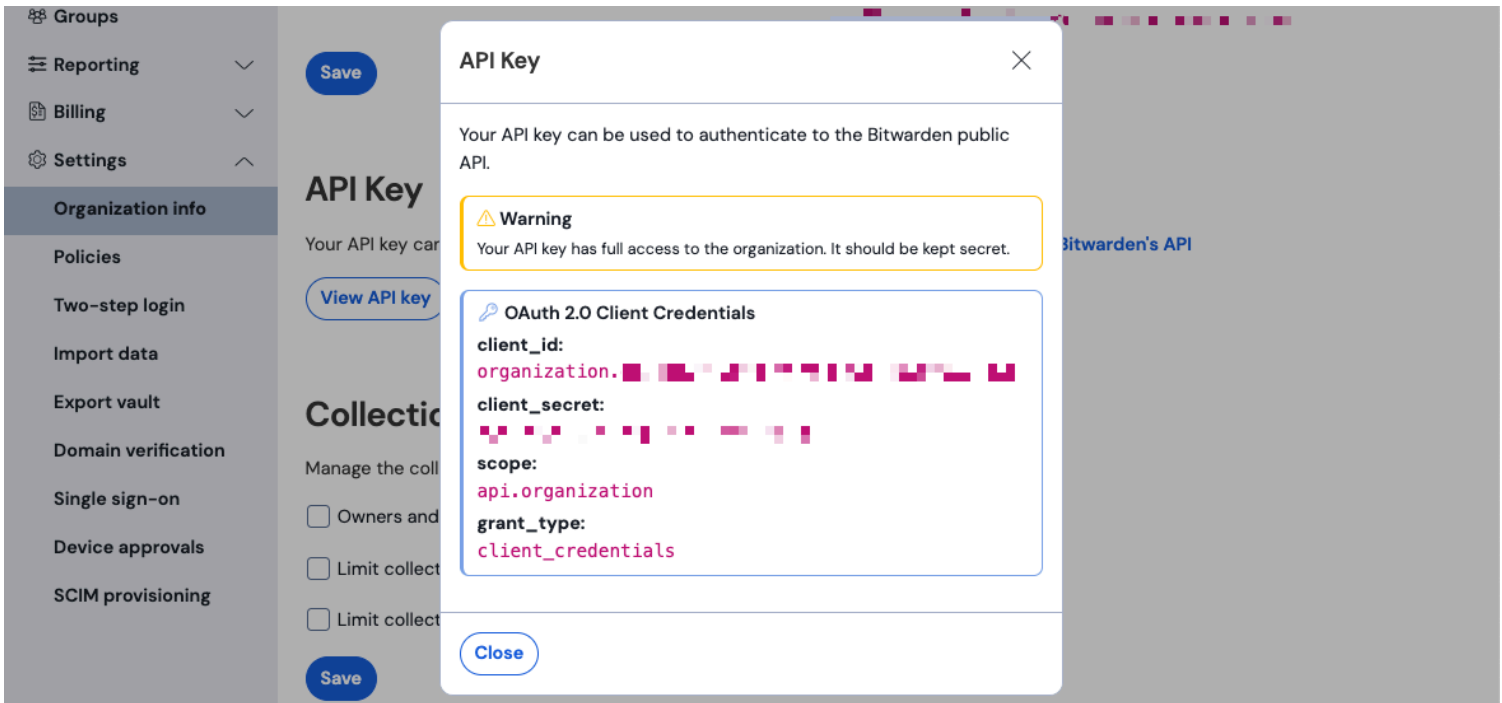
Microsoft Sentinel Bitwarden Event Logs app

2. Keep this screen open, on another tab, log in to the Bitwarden web app and open the Admin Console using the product switcher:



製品-スイッチャー

3. Navigate to your organization's **Settings** → **Organization info** screen and select the **View API key** button. You will be asked to re-enter your master password in order to access your API key information.



組織API情報

4. Return to the Microsoft Sentinel tab. On the **Configuration** page, complete the following fields:

Field	Value
Bitwarden Identity URL	<p>For Bitwarden cloud users, the default URL will be <code>https://identity.bitwarden.com</code> or <code>https://identity.bitwarden.eu</code>.</p> <p>For self-hosted Bitwarden users, input your self-hosted URL. For example, <code>https://&lt;self-hosted-url&gt;/identity</code>. Be sure that the URL does not include any trailing forward slashes at the end of the URL <code>/</code>.</p>
Bitwarden API URL	<p>For Bitwarden cloud users, the default URL will be <code>https://api.bitwarden.com</code> or <code>https://api.bitwarden.eu</code>.</p> <p>For self-hosted Bitwarden users, input your self-hosted URL. For example, <code>https://&lt;self-hosted-url&gt;/api</code>. Be sure that the URL does not include any trailing forward slashes at the end of the URL <code>/</code>.</p>
Client ID	Input the value for <code>client_id</code> from the Bitwarden organization API key window.
Client Secret	Input the value for <code>client_secret</code> from the Bitwarden organization API key window.

Select **Connect** once the required fields have been completed.

## Note

あなたの組織のAPIキー情報は、機密データです。これらの値を非セキュアな場所で共有しないでください。

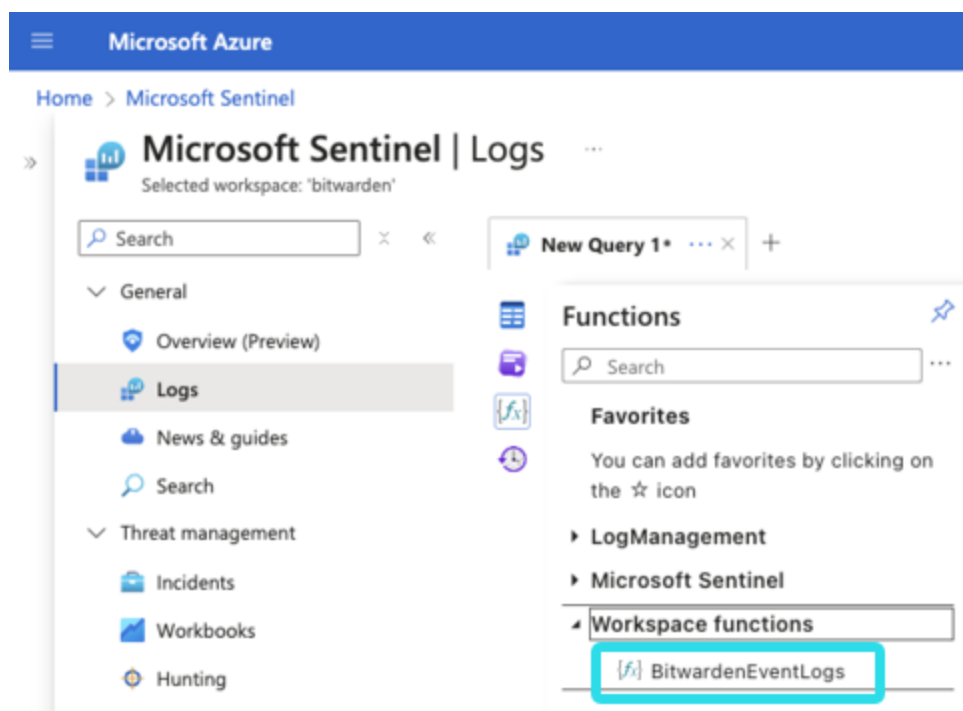
## Start monitoring event logs

## Note

Historic event data is not available for the Bitwarden Event Logs app on Microsoft Sentinel at this time. Additionally, it may take up to 1 hour for the first events to appear in Microsoft Sentinel.

Bitwarden organization event logs can be viewed in Microsoft Sentinel using the `BitwardenEventLogs` query function.

1. From Microsoft Sentinel, select **Logs**. A New Query tab will be created. On the left hand navigation, select **Functions** → **Workspace functions** → **BitwardenEventLogs**.
2. Before running the query, you may select time frame and add specific parameters to the query. To begin the query, select **Run**.



Microsoft Sentinel query

Queries can be saved for future use.

The screenshot shows the Microsoft Sentinel Logs interface. A query for 'BitwardenEventLogs' has been executed, displaying a table of results. The table columns include TimeGenerated [UTC], eventType, itemid, groupid, actingUserid, device, ipAddress, Type, deviceName, eventTypeName, and actingUser. The results show various events such as Group\_Deleted, Cipher\_ClientViewed, and User\_LoggedIn, all originating from Chrome Browsers.

TimeGenerated [UTC]	eventType	itemid	groupid	actingUserid	device	ipAddress	Type	deviceName	eventTypeName	actingUser
> 10/9/2024, 1:41:34.313 PM	1402				9		BitwardenEventLogs_CL	Chrome Browser	Group_Deleted	
> 10/9/2024, 1:41:30.397 PM	1401				9		BitwardenEventLogs_CL	Chrome Browser	Group_Updated	
> 10/9/2024, 1:41:12.765 PM	1107				9		BitwardenEventLogs_CL	Chrome Browser	Cipher_ClientViewed	
> 10/9/2024, 1:41:11.466 PM	1101				9		BitwardenEventLogs_CL	Chrome Browser	Cipher_Updated	
> 10/9/2024, 1:40:37.686 PM	1107				9		BitwardenEventLogs_CL	Chrome Browser	Cipher_ClientViewed	
> 10/9/2024, 1:40:37.288 PM	1000				9		BitwardenEventLogs_CL	Chrome Browser	User_LoggedIn	
> 10/8/2024, 12:58:48.814 PM	1101				9		BitwardenEventLogs_CL	Chrome Browser	Cipher_Updated	
> 10/8/2024, 12:58:45.879 PM	1107				9		BitwardenEventLogs_CL	Chrome Browser	Cipher_ClientViewed	
> 10/8/2024, 12:56:02.933 PM	1101				9		BitwardenEventLogs_CL	Chrome Browser	Cipher_Updated	
> 10/8/2024, 12:55:59.947 PM	1107				9		BitwardenEventLogs_CL	Chrome Browser	Cipher_ClientViewed	
> 10/8/2024, 12:55:57.232 PM	1107				9		BitwardenEventLogs_CL	Chrome Browser	Cipher_ClientViewed	

Microsoft Sentinel query result

## Monitor using Workbooks

Workbooks can be used to review event logs and visualize data. Additionally, templates are included in the Bitwarden Event Logs Workbook for a pre-configured overview of available data.

To access Workbooks, select **Workbooks** from the navigation and then **Templates**.

Home > Microsoft Sentinel

Microsoft Sentinel | Workbooks  
Selected workspace: 'bw-event-logs'

Refresh + Add Workbook Guides & Feedback

0 My workbooks 3 Templates 0 Updates More content at Content hub

My workbooks **Templates**

Search Add filter

Name	Status	Source name
Bitwarden Authentication Events	--	Bitwarden
Bitwarden Organization Events	--	Bitwarden
Bitwarden Vault Items Events	--	Bitwarden

Bitwarden Organization Events

Description: This workbook provides insights on Bitwarden Organizations Event Logs.

Content source: Bitwarden | Template version: 1.0.0

Author: Bitwarden | Supported by: Bitwarden Inc | Email

View Template Save

Workbook templates

The Bitwarden Event Logs app will have three templates included by default. Select one of the templates and choose **View Template** to begin monitoring data.

My workbooks **Templates**

Search Add filter

Name	Status	Source name
Bitwarden Authentication Events	--	Bitwarden
Bitwarden Organization Events	--	Bitwarden
Bitwarden Vault Items Events	--	Bitwarden

Included templates

The dashboards include visualized data:



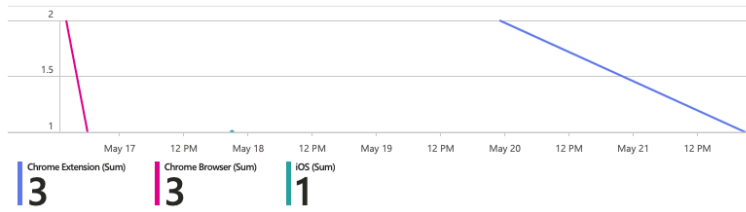
Time: Last 14 days

### Successful Log In Attempts by Country

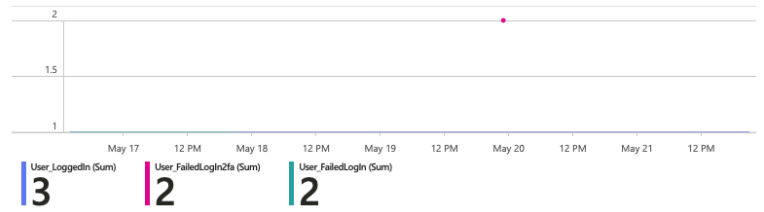


Poland 2 United States 1

### Authentication Events by Device



### Authentication Events by Type



Microsoft Sentinel dashboard view

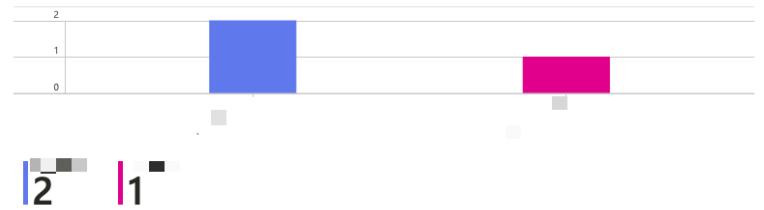
Continue scrolling the overview page for additional event log data:

Top Users By: User Name

### Top Failed Log Event Users



### Top Successful Log Event Users



### Latest Authentication Events

TimeGenerated	eventTypeId	itemId	collectionId	groupId	policyId	memberId	actingUserId	installationId	device	ipA...	TenantId
5/19/2024, 11:36:30.951 PM		1006							2		
5/19/2024, 11:36:16.556 PM		1006							2		
5/16/2024, 2:03:05.447 PM		1000							9		
5/16/2024, 2:03:55.748 PM		1005							9		
5/16/2024, 6:00:29.614 PM		1000							9		
5/17/2024, 9:11:59.709 PM		1005							1		
5/21/2024, 9:34:05.581 PM		1000							2		

Bitwarden even log view