

MY ACCOUNT > TWO-STEP LOGIN >

Two-step Login via YubiKey

View in the help center:

<https://bitwarden.com/help/setup-two-step-login-yubikey/>

Two-step Login via YubiKey

Two-step login using [YubiKey](#) is available for premium users, including members of paid organizations (families, teams, or enterprise). Any [YubiKey that supports OTP](#) can be used. This includes all YubiKey 4 and 5 series devices, as well as YubiKey NEO and YubiKey NFC. You can add up to five YubiKeys to your account.

Tip

Most modern YubiKeys, including 5 series keys, support the FIDO2 WebAuthn protocol. If your key supports it, which you can determine using the [YubiKey Manager](#) application, we recommend setting up your key as a FIDO2 WebAuthn device by following [these instructions](#).

Setup YubiKey

To enable two-step login using Yubikey:

Warning

Losing access to your two-step login device can permanently lock you out of your vault unless you write down and keep your two-step login recovery code in a safe place or have an alternate two-step login method enabled and available.

Get your [recovery code](#) from the **Two-step login** screen immediately after enabling any method. Additionally, users may create a [Bitwarden export](#) to backup vault data.

1. Log in to the Bitwarden web app.
2. Select **Settings** → **Security** → **Two-step login** from the navigation:






The screenshot shows the Bitwarden Security settings page. The left sidebar contains navigation options: Password Manager, Vaults, Send, Tools, Reports, Settings, My account, Security (highlighted), Preferences, Domain rules, Emergency access, and Free Bitwarden Famili... The main content area is titled 'Security' and has three tabs: Master password, Two-step login (selected), and Keys. Under 'Two-step login', there is a warning box with a yellow triangle icon and the text: 'Warning: Setting up two-step login can permanently lock you out of your Bitwarden account. A recovery code allows you to access your account in the event that you can no longer use your normal two-step login provider (example: you lose your device). Bitwarden support will not be able to assist you if you lose access to your account. We recommend you write down or print the recovery code and keep it in a safe place.' Below the warning is a 'View recovery code' button. Underneath is a 'Providers' section with a table of authentication methods:

Provider	Description	Action
	Email Enter a code sent to your email.	Manage
	Authenticator app Enter a code generated by an authenticator app like Bitwarden Authenticator.	Manage
	Passkey Use your device's biometrics or a FIDO2 compatible security key.	Manage
	Yubico OTP security key Use a YubiKey 4, 5 or NEO device.	Manage
	Duo Enter a code generated by Duo Security.	Manage

Two-step login

3. Locate the **YubiKey OTP Security Key** option and select the **Manage** button.

Providers

	Email Enter a code sent to your email.	Manage
	Authenticator app Enter a code generated by an authenticator app like Bitwarden Authenticator.	Manage
	Passkey Use your device's biometrics or a FIDO2 compatible security key.	Manage
	Yubico OTP security key Use a YubiKey 4, 5 or NEO device.	Manage
	Duo Enter a code generated by Duo Security.	Manage

Two-step login providers

You will be prompted to enter your master password to continue.

4. Plug the YubiKey into your computer's USB port.
5. Select the first empty YubiKey input field in the dialog in your web vault.
6. Touch the Yubikey's button.
If you will be using the YubiKey for a NFC-enabled mobile device, check the **One of my keys supports NFC** checkbox.
7. Select **Save**. A green **Enabled** message will indicate that two-step login using YubiKey has been enabled.
8. Select the **Close** button and confirm that the **YubiKey OTP Security Key** option is now enabled, as indicated by a green checkbox (✓).

Repeat this process to add up to 5 YubiKeys to your account.

Note

We recommend keeping your active web vault tab open before proceeding to test two-step login in case something was misconfigured. Once you have confirmed it's working, logout of all your Bitwarden apps to require two-step login for each. You will eventually be logged out automatically.

Self-hosted setup

If you're an organization administrator, you'll need to configure a pair of environment variables in `global.override.env` in order to allow calls to be made to the YubiKey OTP API:

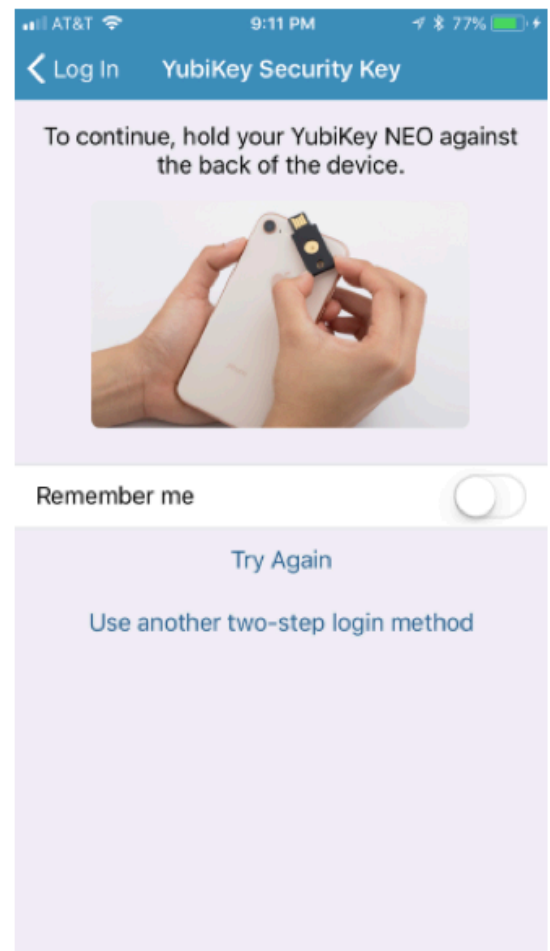
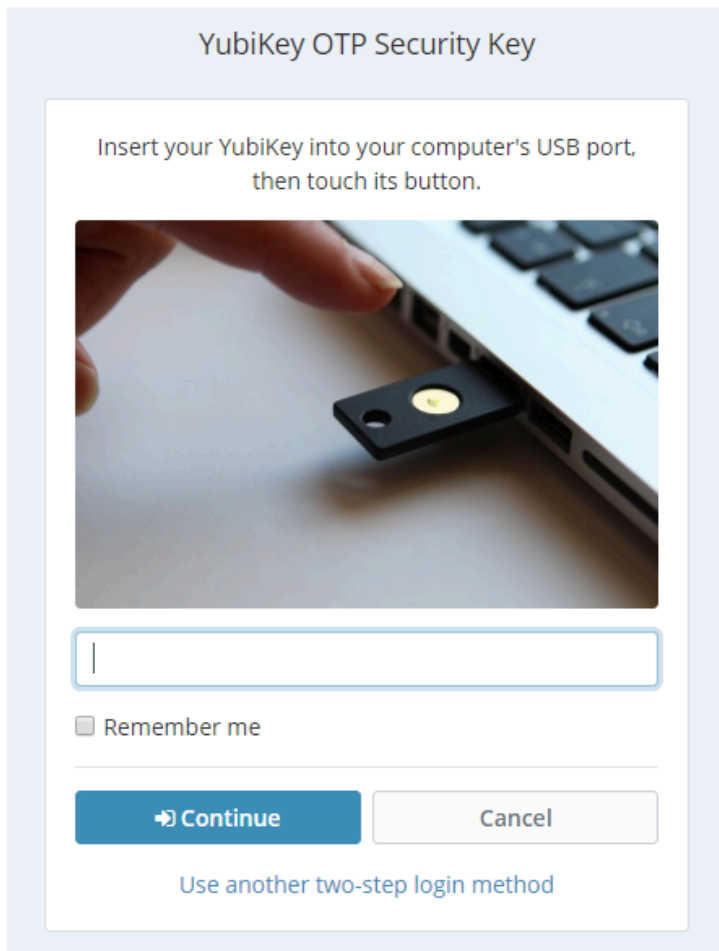
Variable	Description
globalSettings__yubico__clientId	Replace value with ID received from your Yubico Key. Sign up for Yubico Key here .
globalSettings__yubico__key	Input the key value received from Yubico.

Use YubiKey

The following assumes that **YubiKey** is your [highest-priority enabled method](#). To access your vault using a YubiKey:

1. Log in to your Bitwarden vault on any app and enter your email address and master password.

You will be prompted to insert your YubiKey into your computer's USB port or hold your YubiKey against the back of your NFC-enabled device:



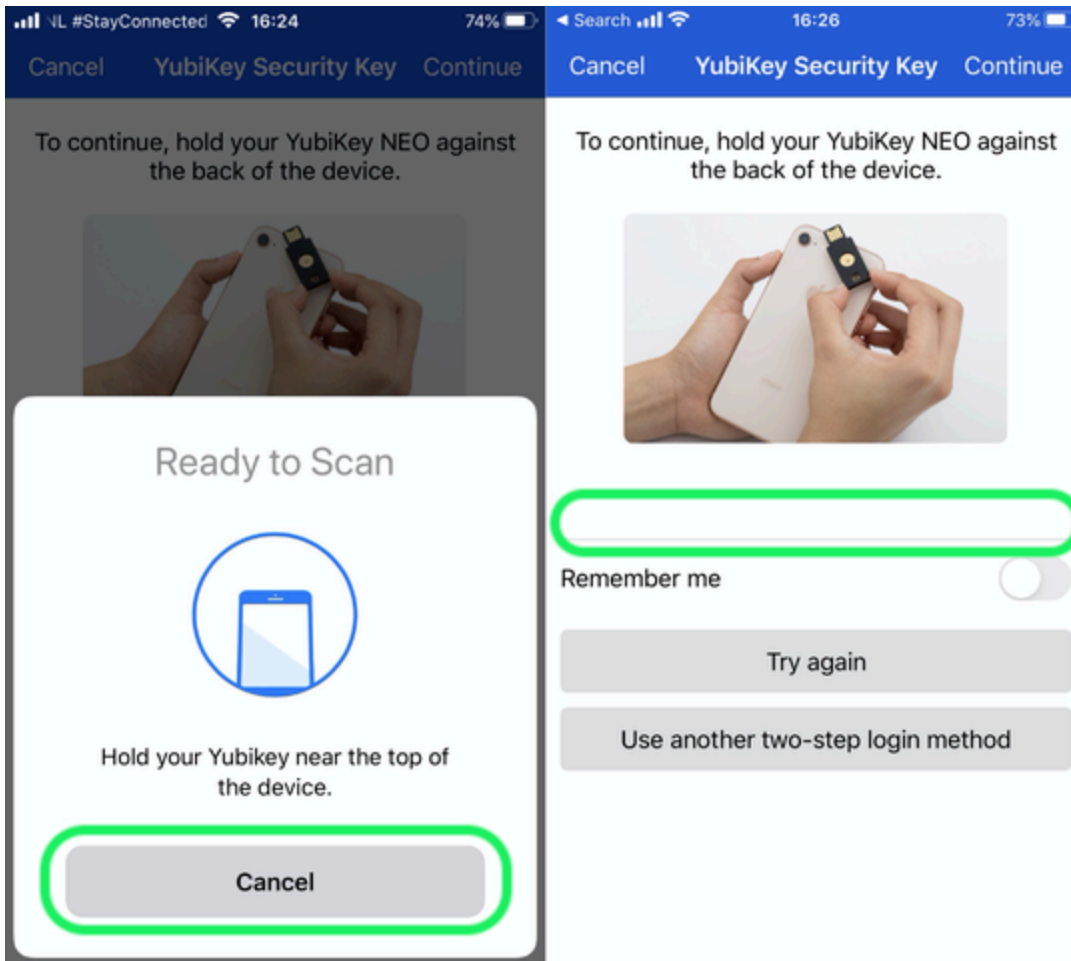
YubiKey Prompt

Tip

Check the **Remember Me** box to remember your device for 30 days. Remembering your device will mean you won't be required to complete your two-step login step.

If you are using a non-NFC YubiKey on a mobile device:

1. Plug your YubiKey into the device.
2. Tap **Cancel** to end the NFC prompt.



Cancel NFC

3. Tap the text input field, denoted by a gray underline.
4. Tap or press your YubiKey button to insert your code.
2. Select or tap **Continue** to finish logging in.

You will not be required to complete your secondary two-step login step to **unlock** your vault once logged in. For help configuring log out vs. lock behavior, see [vault timeout options](#).

NFC troubleshooting

If your YubiKey's NFC functionality isn't working properly:

Check that NFC is enabled:

1. Download [YubiKey Manager](#).
2. Plug the YubiKey into your device.
3. Select the **Interfaces** tab, and check that all boxes in the NFC section are checked.

Check that NFC is configured properly:

1. Download the [YubiKey personalization tool](#).
2. Plug the YubiKey into your device.
3. Select the **Tools** tab.
4. Select the **NDEF Programming** button.
5. Select the the configuration slot you would like the YubiKey to use over NFC.
6. Select the **Program** button.

(Android-only) Check the following:

- That you checked the **One of my keys supports NFC** checkbox during setup.
- That your Android device supports [NFC](#) and is [known to work properly](#) with YubiKey NEO or YubiKey 5 NFC.
- That you have NFC enabled on your Android device (**Settings** → **More**).
- That your keyboard layout/format/mode is set to QWERTY.