

LEARNING CENTER > PASSWORD MANAGER

Get Started with Bitwarden: Individual User

View in the help center:

<https://bitwarden.com/help/get-started-individual-user/>

Get Started with Bitwarden: Individual User

Welcome to the Bitwarden family! Your secure password management journey starts here:

Sign up for Bitwarden

Bitwarden offers free accounts with no limits to the number of devices or number of logins you can use. [Why wait?](#)

Your master password

During sign-up, you'll create a master password for logging in to Bitwarden. It's important that your master password is:

- **Memorable:** Bitwarden employees and systems have **no** knowledge of, way to retrieve, or way to reset your master password. **Do not forget your master password!**
- **Strong:** A longer, more complex, and less common password is the best way to protect your account. Bitwarden provides a free [password strength testing tool](#) to test the strength of some memorable passwords you are considering.



Set a strong password

Finish creating your account by setting a password

Master password (required)

Important: Your master password cannot be recovered if you forget it! 12 character minimum.

Strong

Confirm master password (required)

Master password hint

If you forget your password, the password hint can be sent to your email. 0/50 character maximum.

Check known data breaches for this password

Create account

Set a master password

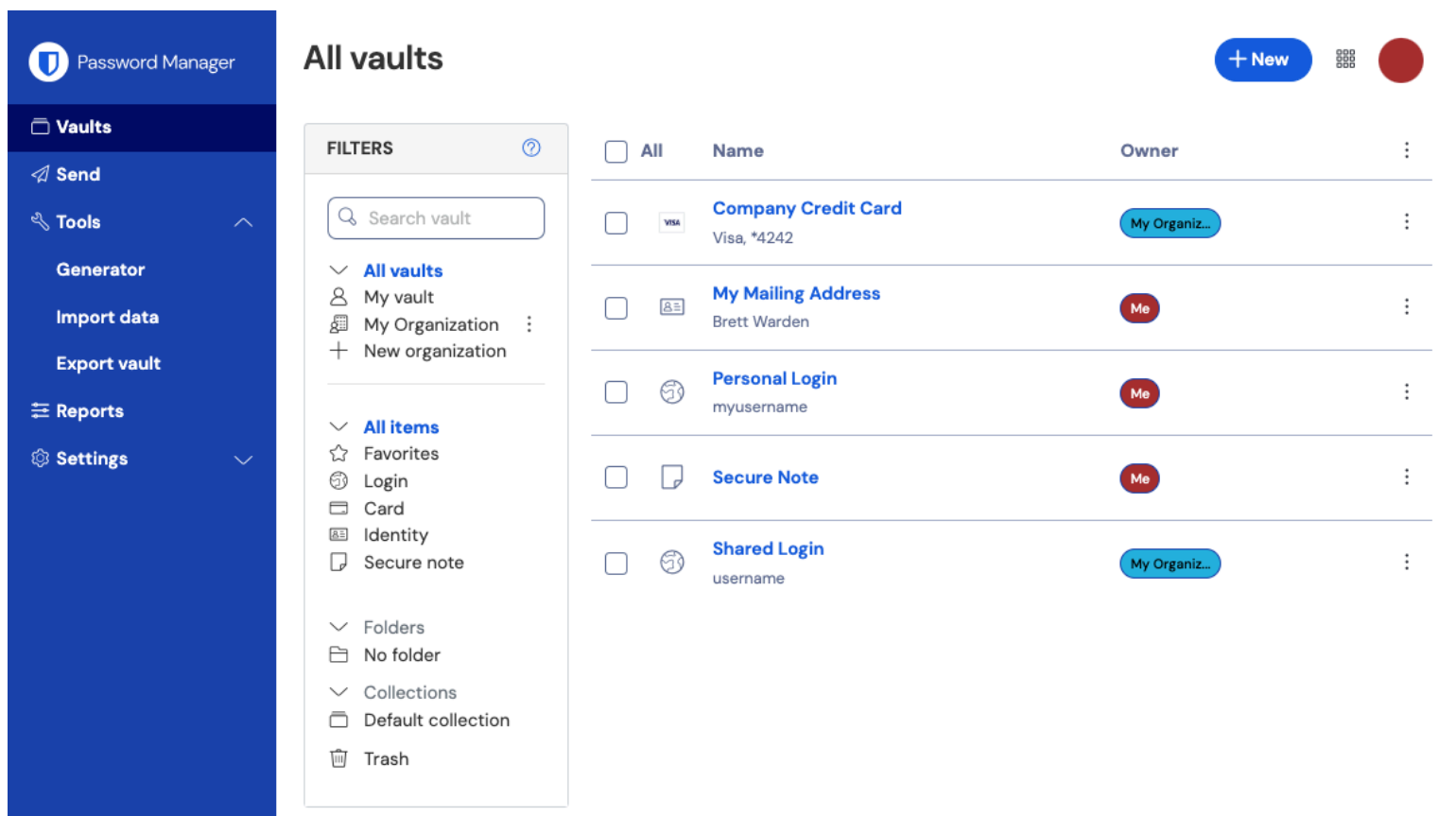
Two-step login

Using two-step login, also called 2-factor authentication or 2FA, is the most important thing you can do to protect your data other than using a strong master password.

It's so important that we offer a few options for free, including [Bitwarden Authenticator](#), a standalone mobile authenticator.

Get to know your vault

The Bitwarden Password Manager web app will list all your vault items, including [logins](#), [cards](#), [identities](#), and [secure notes](#):



Password Manager web app

From the web app, you can fill your vault with information to keep secure, organize your credentials for easy access, and more. Items that you add in any Bitwarden app will sync to other Bitwarden apps you log in to so you can log into accounts from anywhere.

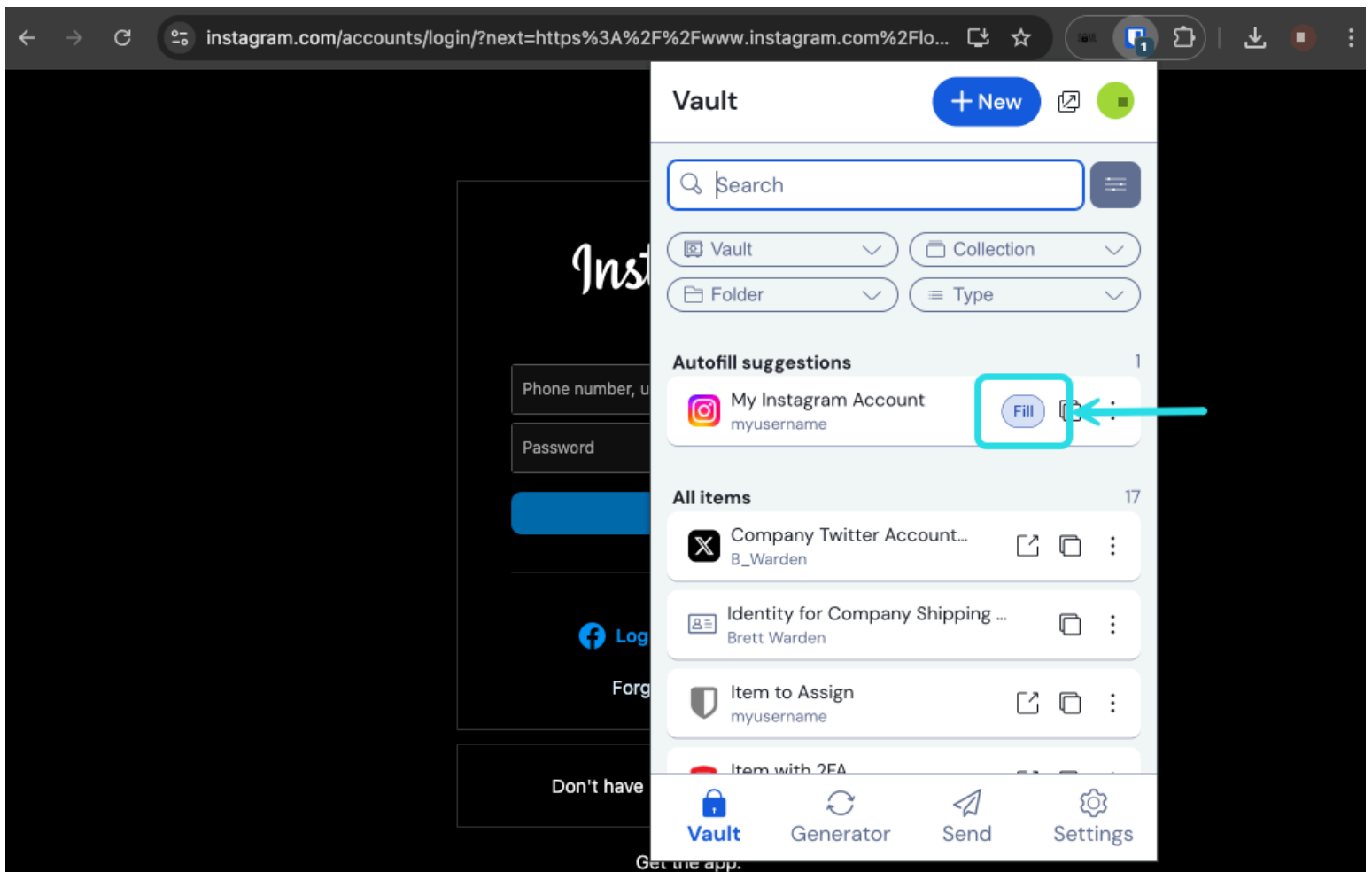
Import your data

Do you have passwords saved in a browser, like Chrome? Or are you coming to Bitwarden from another password manager? You can import logins directly to Bitwarden to [avoid a painful day of copy-and-pasting](#).

Or, if you store passwords on paper or in your brain, let's get you started [adding more items to your vault](#).

Use Bitwarden while browsing

Bitwarden browser extensions make it easy to quickly log in to your accounts with saved passwords with the magic of autofill. [Download](#) the browser extension and [learn how to autofill passwords](#) while browsing the web:

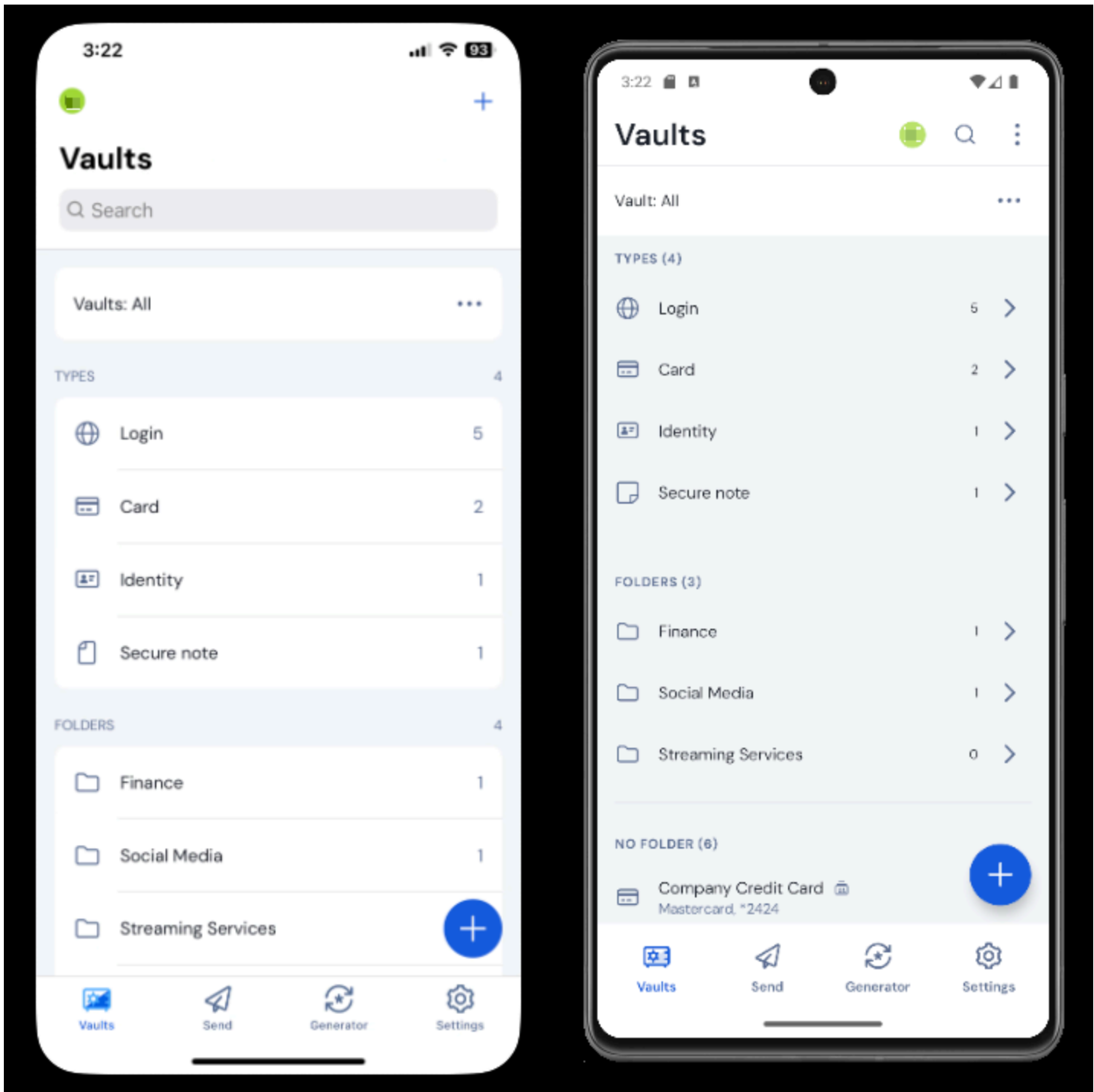


Autofill via browser extension

It's best to [disable your browser's built-in password manager](#) to ensure that Bitwarden is always your go-to password manager.

Take Bitwarden on-the-go

Security anywhere is security everywhere! Get the Bitwarden mobile app so you can safely use your passwords while you're on-the-go. [Download](#) the mobile app and learn how to autofill passwords on [iOS](#) or [Android](#):



Bitwarden on iOS and Android