

PASSWORD MANAGER > AUTOFILL >

Autofill Logins on iOS

Ver en el centro de ayuda:
<https://bitwarden.com/help/auto-fill-ios/>

Autofill Logins on iOS

Bitwarden makes your passwords and passkeys available for autofill so that you can seamlessly log in to websites and apps while also maintaining strong and secure passwords. Autofill cuts the copying and pasting out of your login routine by detecting vault items that match the service you are logging in to.

Autofilling passkeys, including being prompted by Bitwarden when you create a new passkey, requires iOS 17.0 or higher.

Tip

Most autofill scenarios rely on the attribution of URIs to login items. If you are unfamiliar with using URIs, brush up using our [Using URIs](#) article.

Please note that custom fields are not currently supported in mobile autofill.

Setup autofill

Autofill on iOS comes in four flavors:

- **Keyboard autofill:** (Recommended) Use this option to make Bitwarden autofill accessible in any iOS app (including web browsers) through a keyboard button or slide-up prompt.
- **Browser app extension:** Use this option to make Bitwarden autofill accessible only in web browser apps, like Safari, through the Share menu.
- **Long-press a text field:** Use this option to autofill from Bitwarden in a larger variety of locations.

Tip

It is currently not possible to use auto-fill on iOS if your [vault timeout action](#) is set to **Log Out** and your only enabled [two-step login method](#) requires NFC (for example, an NFC YubiKey), as iOS will not allow NFC inputs to interrupt autofill workflows.


Either change your vault timeout action to **Lock**, or enable another two-step login method.

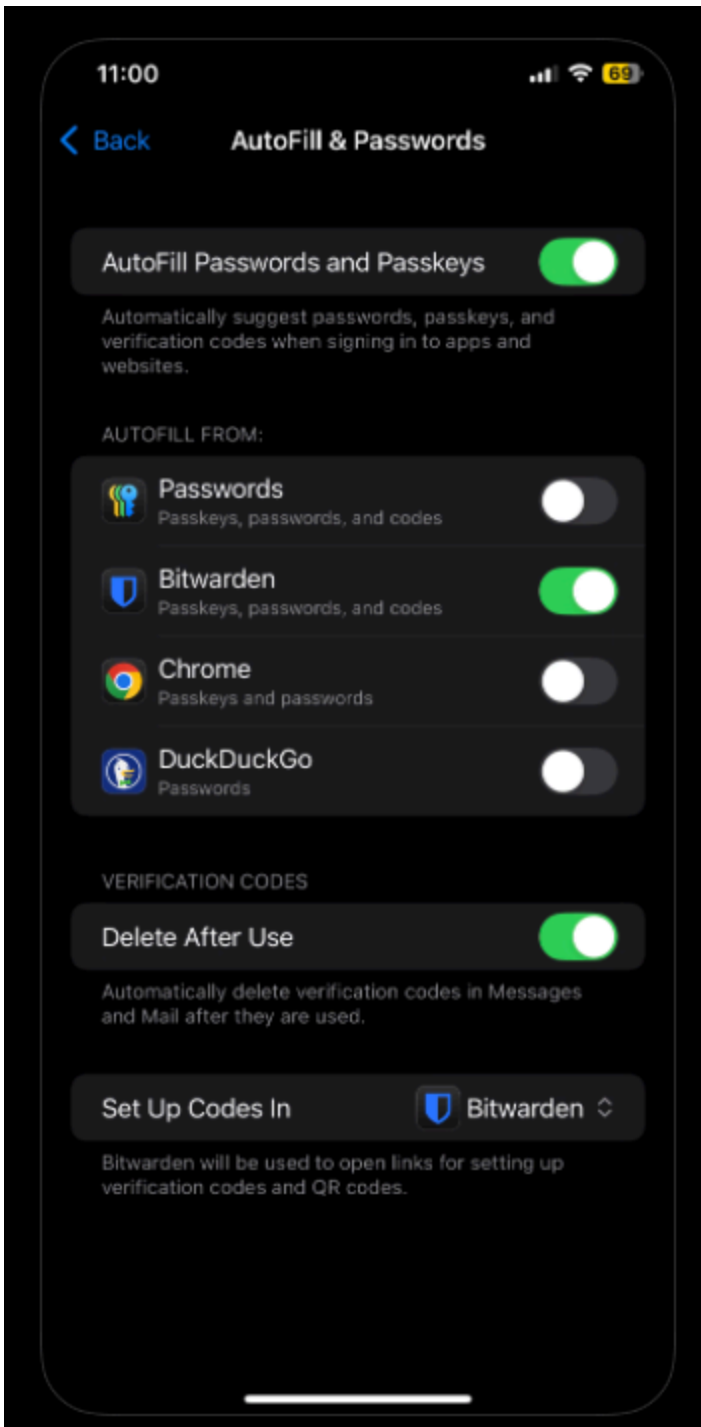
Note

If you are using Argon2id with a KDF memory value higher than 48 MB, a warning dialogue will be displayed every time iOS autofill is initiated or a new Send is created through the Share sheet. To avoid this message, adjust Argon2id settings [here](#) or enable [unlock with biometrics](#).

Keyboard autofill

To activate keyboard autofill on iOS for passwords, complete the following steps. This will also activate the slide-up menu for passkey autofill:

1. Open iOS  **Settings** and then **General** on your device.
2. Tap **AutoFill & Passwords**.
3. Toggle **AutoFill Passwords and Passkeys** on and tap **Bitwarden** in the **Autofill From:** list:



Setup autofill on iOS

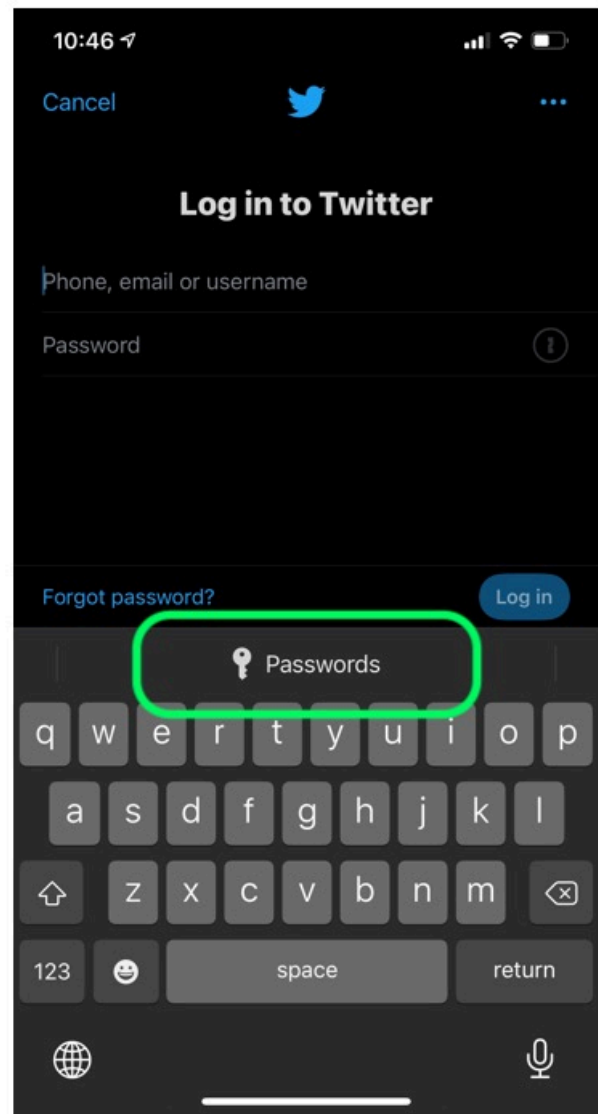
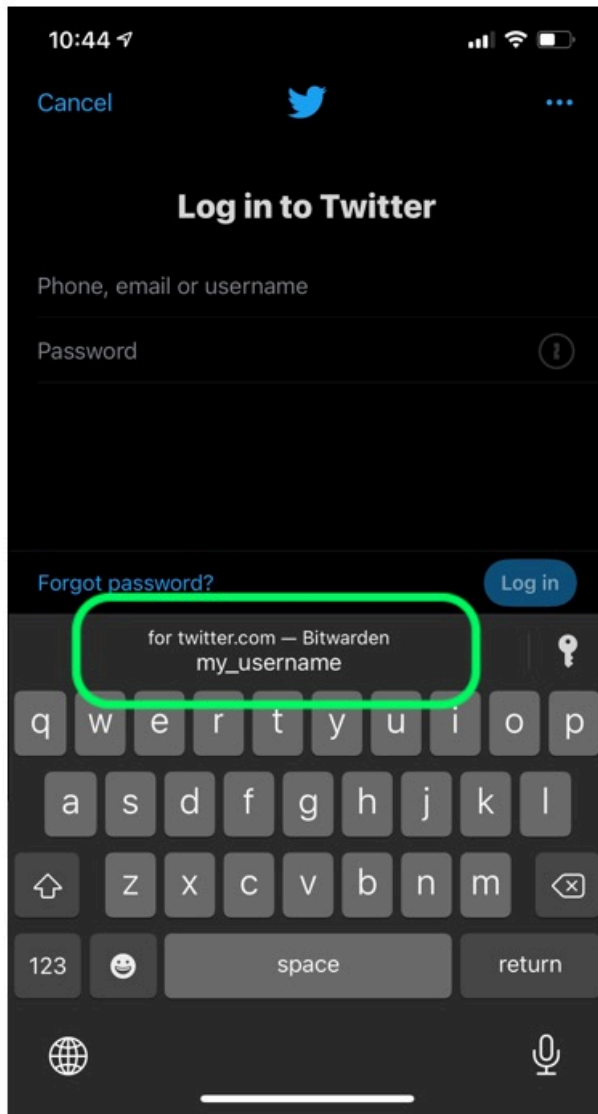
Tip

We highly recommend deactivating any other autofill service (like Keychain) in the **Autofill From:** list.

Let's test autofill to make sure it's working properly:

4. Open an app or website that you aren't currently signed in to.

5. Tap the username or password field on the login screen. A keyboard will slide up with a matching login (`my_username`), or with a **Passwords** button:



AutoFill on iOS


If a [matching login](#) is displayed, tap it to autofill. If the **Passwords** button is displayed, tap it to browse your vault for the login to use. In cases where the **Passwords** button is displayed, it's probably because there isn't an item in your vault with a [matching URI](#).

Note

Are you getting a **Biometric unlock disabled pending verification of master password** message? [Learn what to do.](#)

Browser app extension autofill

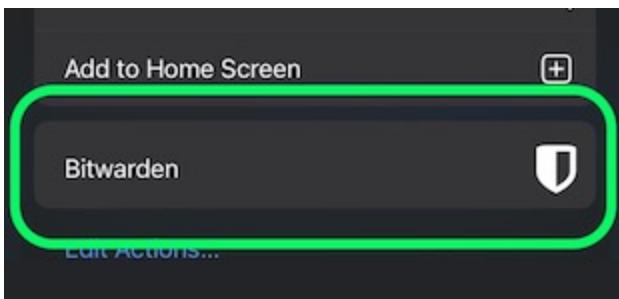
To enable browser app extension autofill on iOS:

1. Open your Bitwarden app and tap  **Settings**.
2. Tap **Autofill**.
3. Tap the **App extension** option in the Autofill section.
4. Tap the **Activate app extension** button.
5. From the share menu that slides up, tap **Bitwarden**.

A green **Extension Activated!** message will indicate success.

Let's test the app extension to make sure it's working properly:

6. Open your device's web browser and navigate to a website that you aren't currently signed in to.
7. Tap the **Share** icon.
8. Scroll down and tap the **Bitwarden** option:



Bitwarden in the Share menu

Note

If you have [unlock with biometrics](#) enabled, the first time you tap this option you will be prompted to verify your master password.

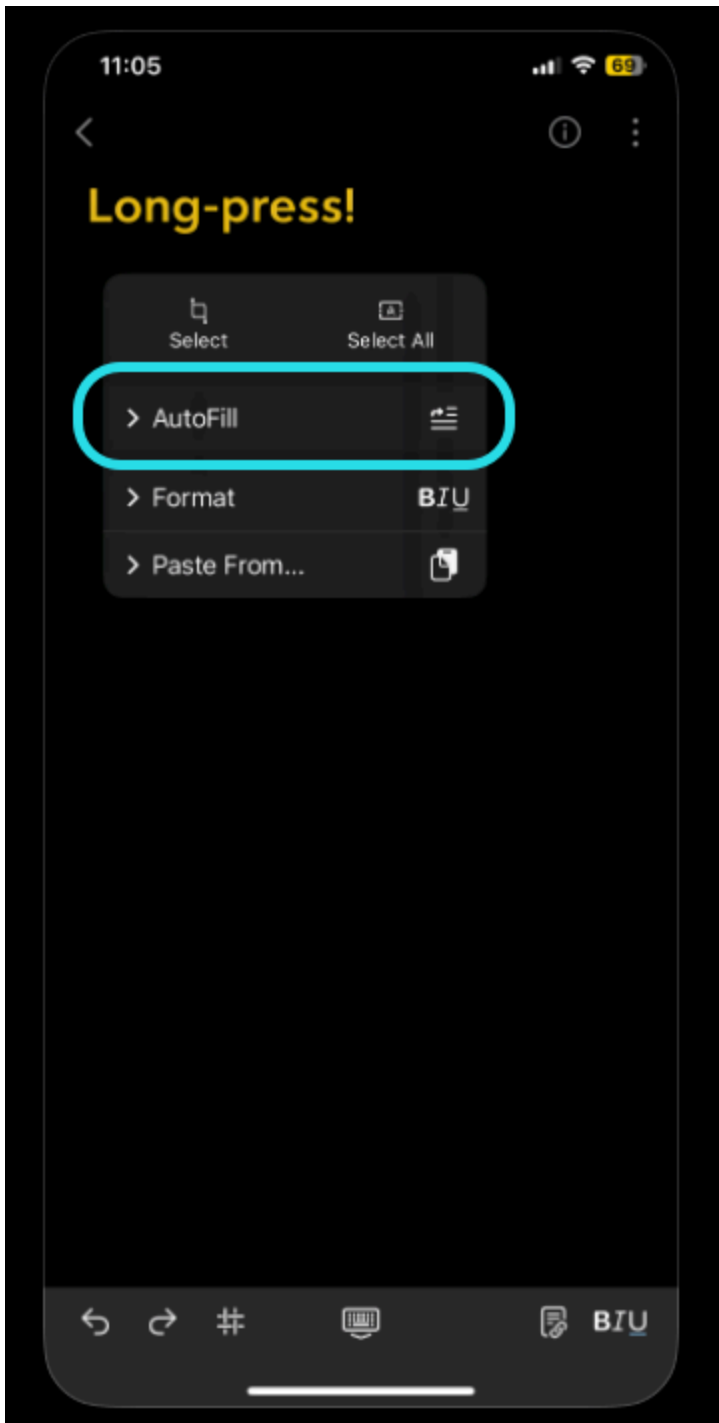
9. A Bitwarden screen will slide up on your device and will list [matching logins](#) for the website. Tap the item to autofill.

Tip

If there are no logins listed, it's probably because there isn't a login in your vault with a [matching URI](#).

Long-press a text field

By long-pressing any text field, you can autofill data from Bitwarden and long as it's active as the keyboard auto-fill option:



Long-press a text field on iOS

Switch accounts during autofill

If you are [logged in to more than one account](#), your [mobile app](#) will default to trying to autofill credentials from the currently active account. You can switch from one account to another during autofill by tapping the avatar bubble.

Using passkeys

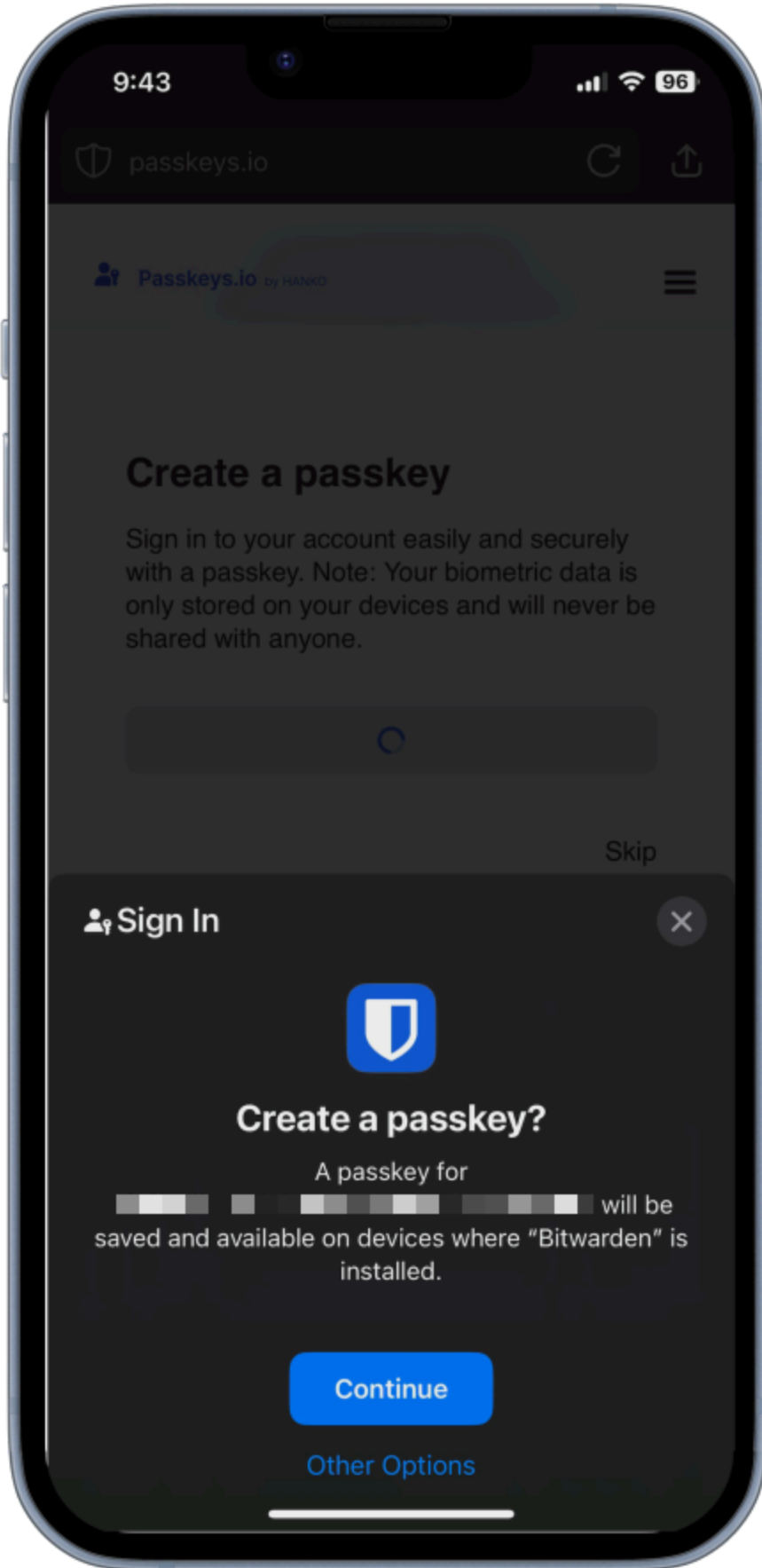
Setup Bitwarden for use with passkeys

To use the functionality described below, open your iOS **Settings** app and navigate to **Passwords** → **Password Options**. Toggle the following options on:

- Toggle **AutoFill Passwords and Passkeys** on.
- Toggle **Bitwarden** on in the **Use passwords and passkeys from:** list.

Create a passkey

When creating a new passkey on a website or app, the iOS application will prompt you to store the passkey:



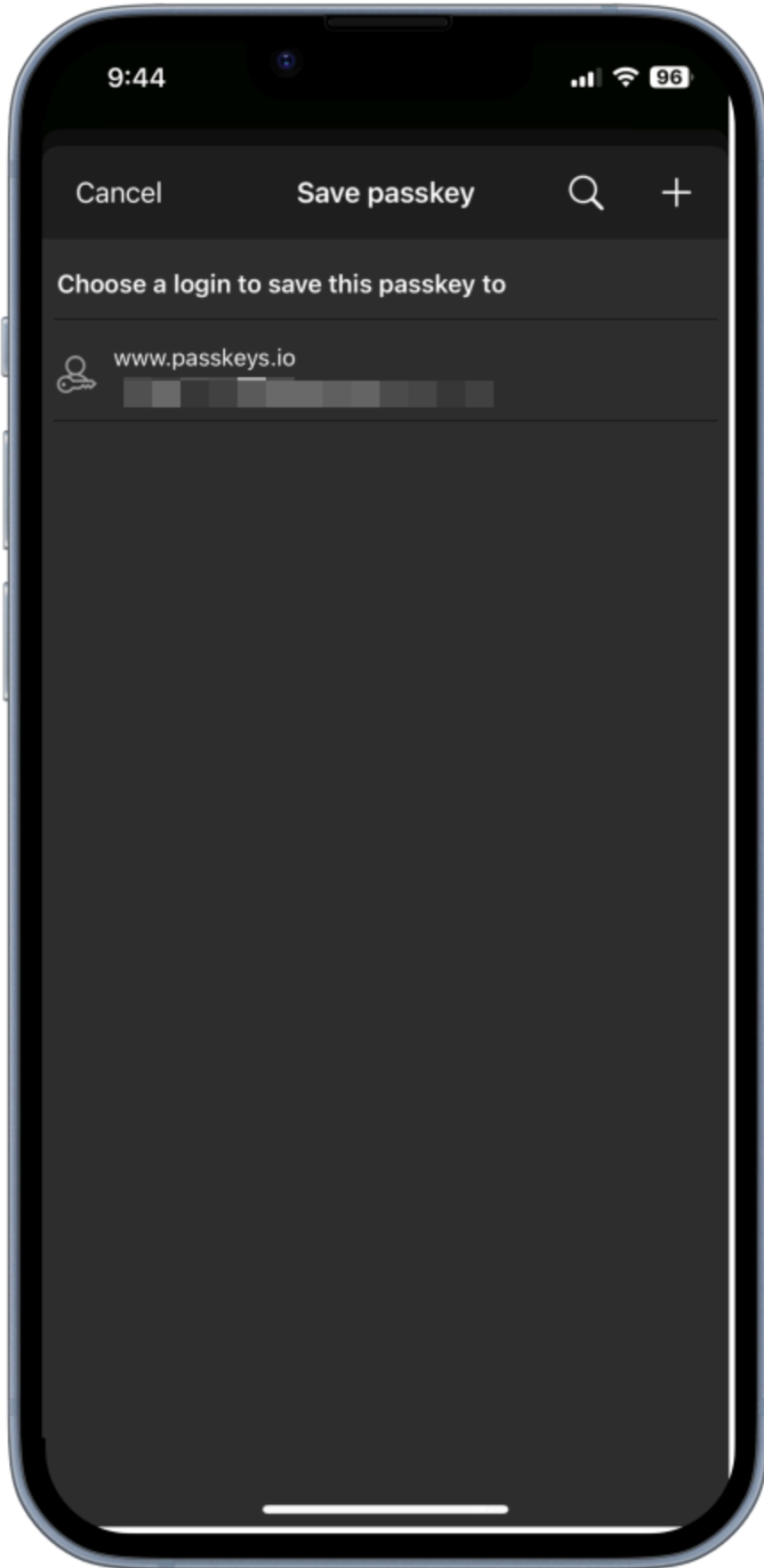
Create a passkey

Select **Continue**.

Note

Select **Other Options** if you do not wish to store the passkey in Bitwarden or **Other Sign In Options** to sign in with a passkey not stored in Bitwarden.

If a passkey already exists for this service, Bitwarden will allow you to save a new passkey by selecting the + icon to create a new item, or by overwriting an existing passkey:



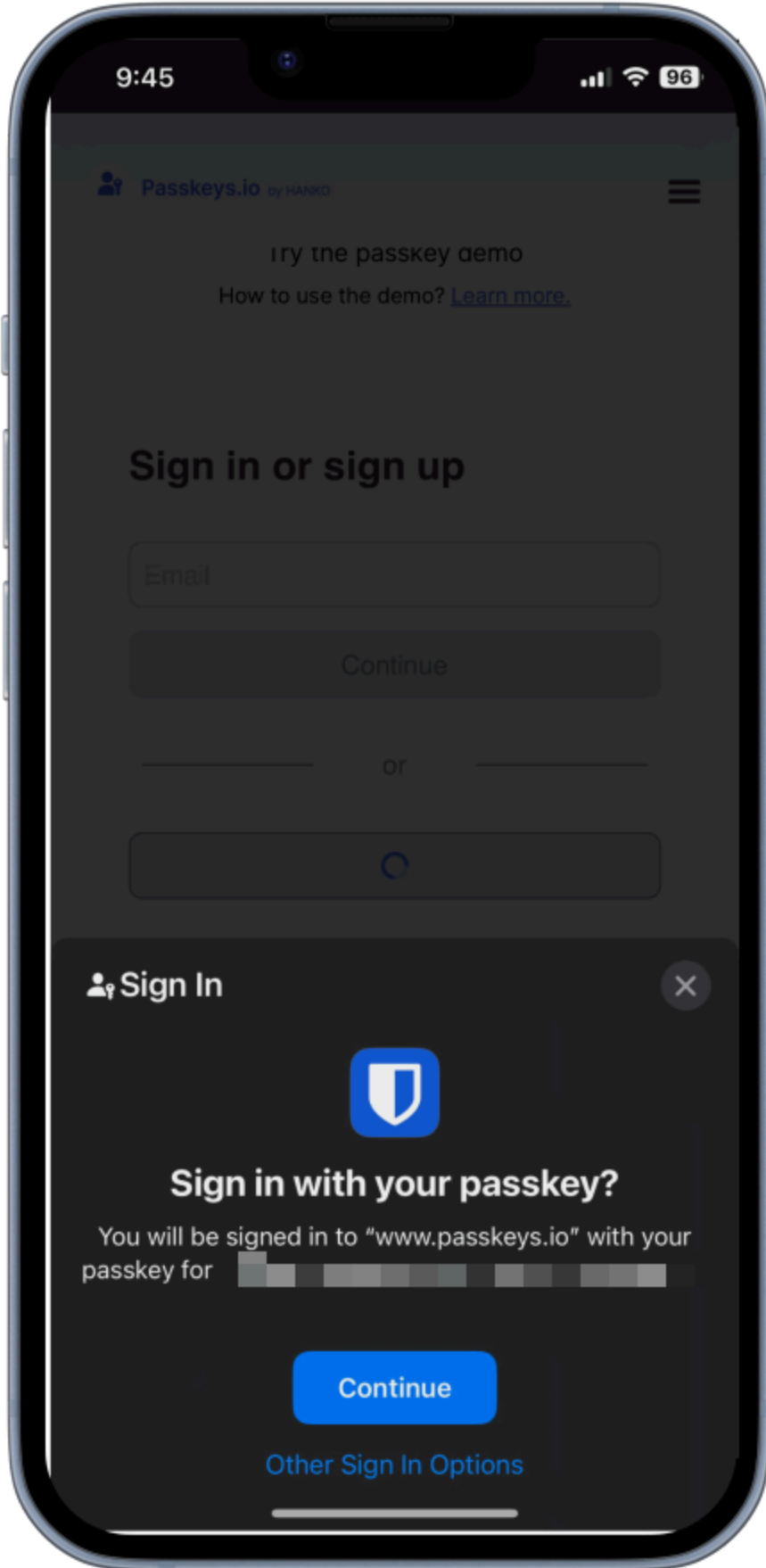
Save or overwrite a passkey

Note

Sólo se puede guardar una clave de acceso por elemento de inicio de sesión. Si una credencial se guarda en varios lugares, por ejemplo como dos elementos de inicio de sesión separados en el almacén individual y el almacén de la organización respectivamente, se puede almacenar una clave de acceso diferente con cada elemento de inicio de sesión.

Sign in using a passkey stored in Bitwarden

To use a passkey stored in Bitwarden, initiate the passkey login on the website. The mobile app will provide an option to login using the passkey stored in your Bitwarden vault:



Sign in with passkey

Select **Continue**.

Note

Select **Other Options** if you do not wish to store the passkey in Bitwarden or **Other Sign In Options** to sign in with a passkey not stored in Bitwarden.